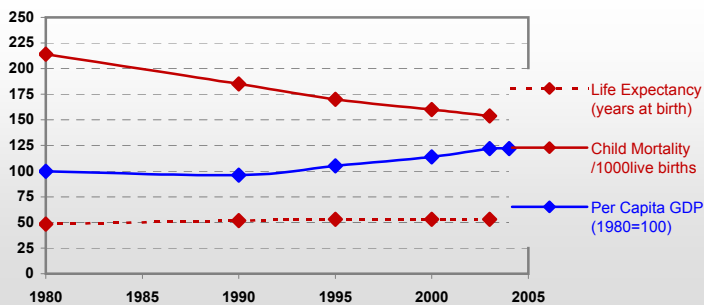


Benin



General / Welfare

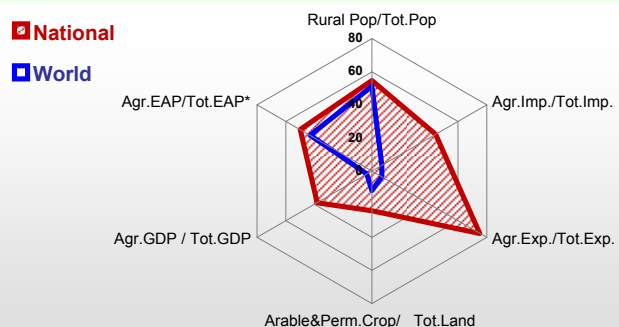
Population ^{04 *}	6 918
Per Capita GDP ^{04 **}	387
Agricultural GDP/Ag.Population ^{04**}	295
Total Exports ^{04 ****}	855
Total Imports ^{04 ****}	304
Agric. External Assistance ^{03 ***}	62 663
Food Consumption Inequality (G) ^{ly}	0.17
Income Inequality (G) ^{ly}	-
Land Inequality (G) ^{ly}	-
Undernourished Population % ⁰¹⁻⁰³	14



* 1000 ** \$ *** 1000 \$ **** Million \$ --- (G) : Gini Coefficient --- GDP at 2000 Constant Prices

Agriculture In The Economy^{ly}

Resources

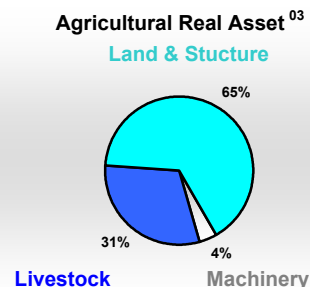
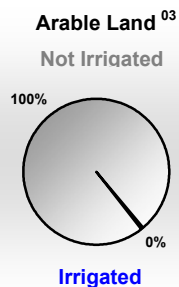
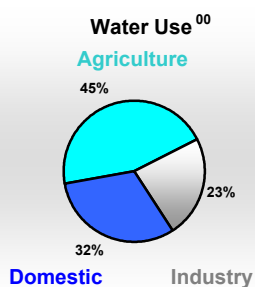
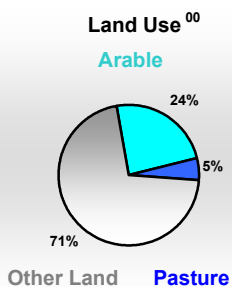


Arable Land ^{00 *}	2 380
Permanent Crops ^{00 *}	265
Pasture ^{00 *}	550
Cattle & Buffaloes ^{04 **}	1 745
Sheeps & Goats ^{04 **}	2 050
Tractors ^{03 / *}	0
Harvesters&Threshers ^{03 / *}	-
Fertilizers Production ^{02 ***}	-
Fertilizers Consumption ^{02 ***}	47 841
Rainfall Index ^{02 (mm)}	960

* EAP : Economically Active Population ---

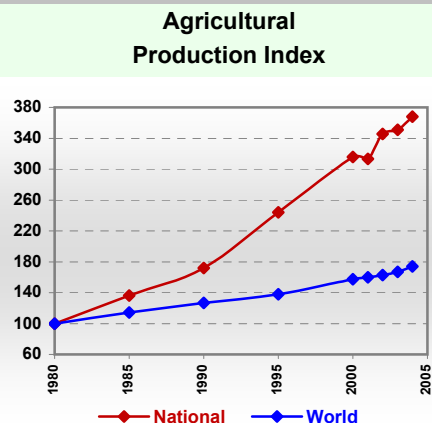
* 1000ha ** 1000heads *** Tonnes N,P₂O₅,K₂O

Resources Distribution



Production

Agriculture ^{04 *}		Forestry ⁰⁴	
Cereals	1 109	Indust.Roundwood **	332
Meat	54	Wood Fuel **	162
Fruits & Vegetables	626	Wood Charcoal *	205
Roots & Tubers	5 265	Sawn Wood **	31
Pulses	119	Wood Based Panels **	-
Oilseeds (oil equiv.)	158	Wood Pulp *	-
Sugar Crops	70	Paper, Paper Board *	-
Milk	34	Fisheries ^{04 *}	
Eggs	9	Pelagic	9
Stimulants	0	Freshwater	19
Tobacco	1	Demersal	5
Fiber Crops	150	Molluscs	-



* 1000Tonnes ** 1000m³

Time reference=⁹⁹⁻⁰¹:1999-2001, ⁰⁰:2000, ⁰²:2002, ⁰⁰⁻⁰²:2000-2002, ⁰³:2003, ⁰⁴:2004, ^{ly}:Latest Available Year

Benin

Trade ⁰⁴

Agricultural Imports *	381
% 4 Major Imports in Agr. Imp.	53
% Agr. Imports in Tot. Imports	45
Fishery Imports *	13
Forestry Imports *	9
Agricultural Exports *	228
% 4 Major Exports in Agr. Exp.	87
% Agr. Exports in Tot.Exports	75
Fishery Exports *	2
Forestry Exports *	7



* Million \$

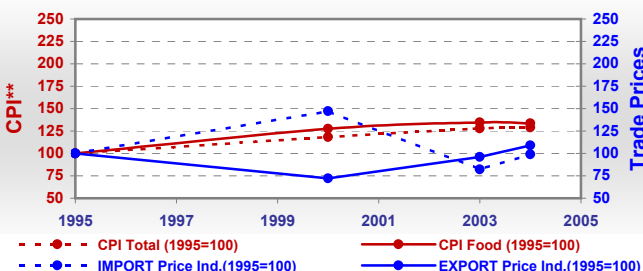
Trade Partners & Products

Major Import Partner	-	-	-
Major Exports Partner	-	-	-
Major Imports	Rice	Tomato paste	Chicken meat
Major Exports	Cotton lint	Cashew nuts	Cigarettes

Prices

Producer Prices ⁰¹⁻⁰³	\$*	\$Green *
Wheat	-	-
Rice	-	-
Maize	-	-
Soybean	-	-
Coffee	-	-
Tobacco	-	-
Cow Milk	-	-
Cattle (Live Weight)	-	-
Pig (Live Weight)	-	-
Chicken (Live Weight)	-	-

Consumer and Agricultural Trade Price Indices

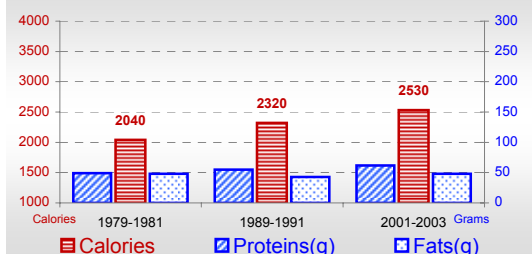


* per Tonne

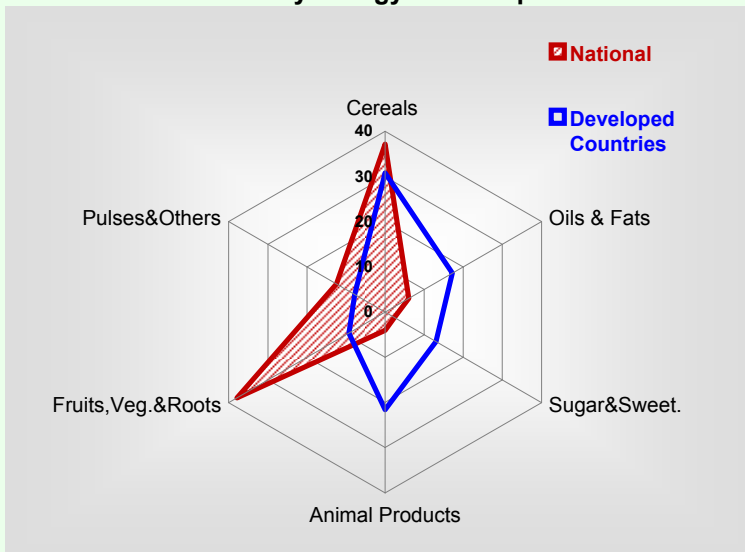
** CPI : Consumer Price Index

Consumption

Per Capita Daily Consumption



Source of Dietary Energy Consumption % ⁰¹⁻⁰³



Per Capita Daily Calorie Intake From Selected Food Items ⁰¹⁻⁰³

Rice	198
Wheat	60
Maize	472
Sorghum	177
Potatoes	0
Cassava	476
Sugar	60
Soybean Oil	9
Palm Oil	48
Milk	22
Anim.Fats(Raw&Butter)	5
Eggs	3
Pigmeat	5
Poultry Meat	29
Bovine Meat	16
Sheep & Goats Meat	4

Food Balance ^{01-03 (1000Tonnes)}

Food Groups	Production (+)	Exports (-)	Imports (+)	Stock changes & Other uses (-)	Consumption (=)
Cereals	1 013	-	202	482	733
Veg.oils	61	25	27	23	40
Sugar&Sw.	6	-	24	-11	41
Roots&Tub.	5 009	-	2	2 972	2 038
Meat	48	8	78	0	117
Milk	32	3	47	2	75