

# Two Dimensional Imaging System

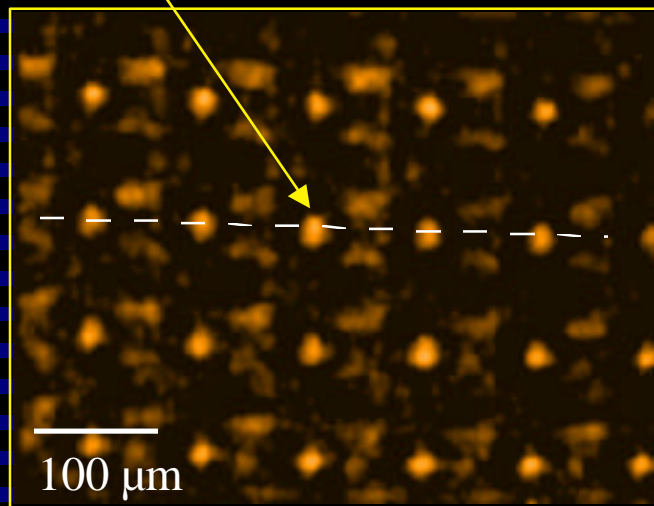


- Focal point is shifted when spiral is deflected.
- Spiral arrays can be monitored with a CCD camera.
- Array density of over 100 pixels per mm<sup>2</sup>

# Modulation of a Single Element

2-D Array proof of concept using a focused IR laser

IR Heating **OFF**



IR Heating **ON**

