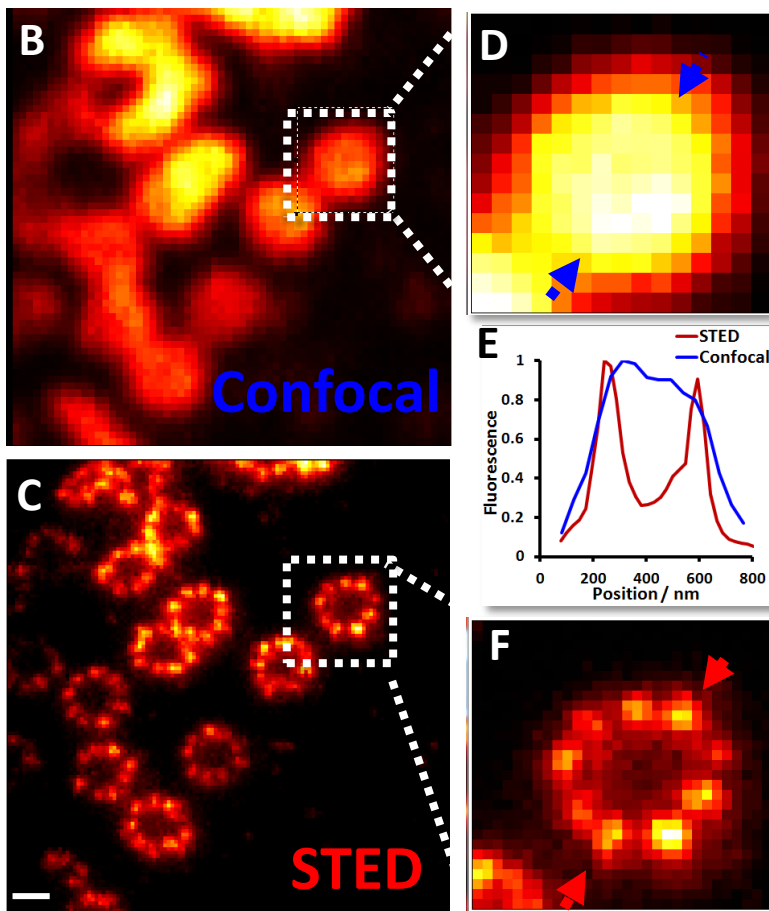


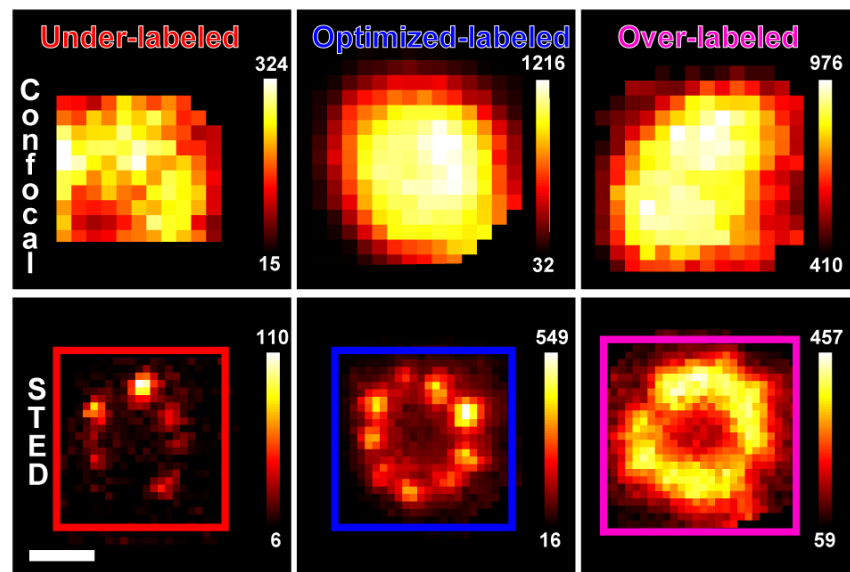
STED Microscopy with Optimized Labeling Density Reveals 9-fold Arrangement of a Centriole Protein



1) STED reveals the 9-fold symmetry of Atto647N immunolabeled Cep164



2) STED quantifies labeling density effects



3) STED microscopy enables measurement of distributions of behavior as opposed to the averaged results from electron microscopy