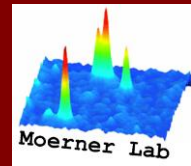
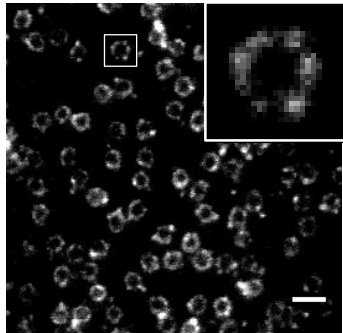


Cby1 promotes Ahi1 recruitment to a ring-shaped domain at the centriole-cilium interface and facilitates proper cilium formation and function.



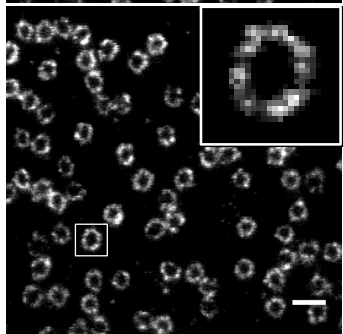
YL Lee, J Santé, CJ Comerci, B Cyge, LF Menezes, F-Q Li, GG Germino, WE Moerner, K-I Takemaru, T Stearns.

Tmem237

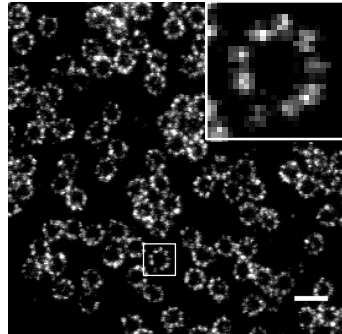


STED immunofluorescence microscopy reveals the ring structure of five centriolar proteins

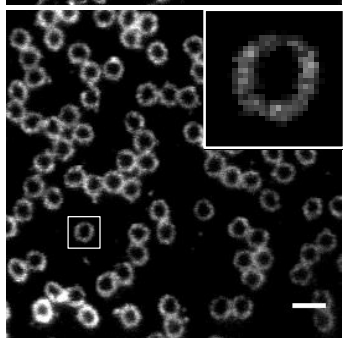
Ahi1



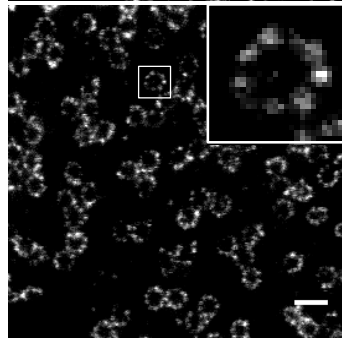
Ofd1



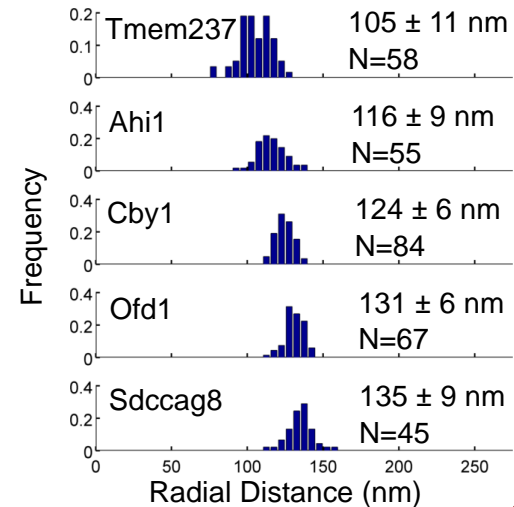
Cby1



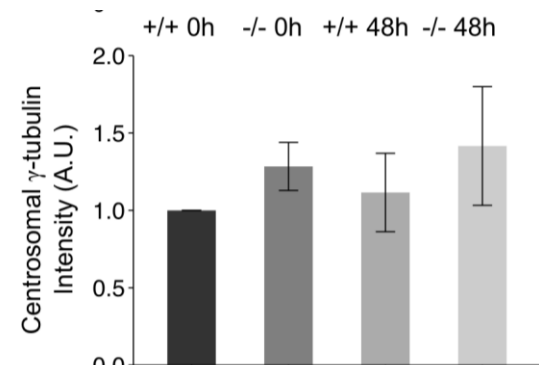
Sdccag8



Radial intensity profiles determine the average radial position, establishing a domain containing Ahi1, Cby1, and Ofd1



Cby1 knockout MEFs fail to recruit Ahi1 to the centriole while Ofd1 levels remain the same



Molec Biol Cell. (online 7 Aug 2014)