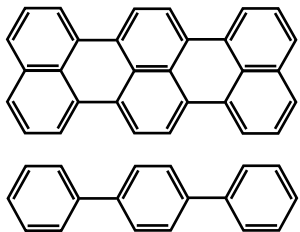


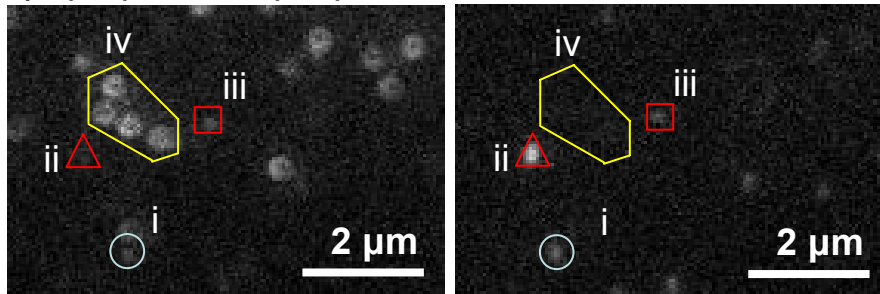


Sample Prep Spin coating



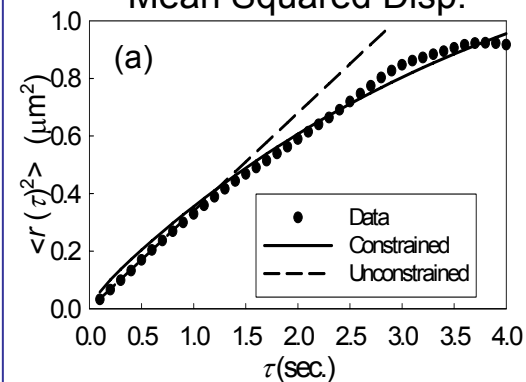
Polarization

p: perp. to sample plane *s*: para. to sample plane

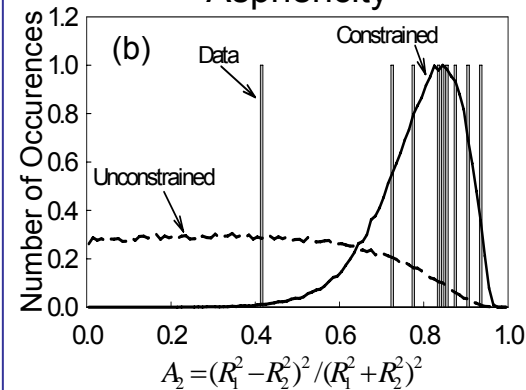


Mover Analysis

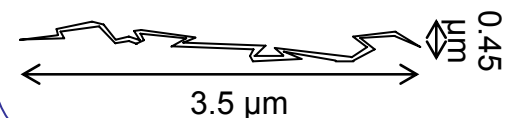
Mean Squared Disp.



Asphericity

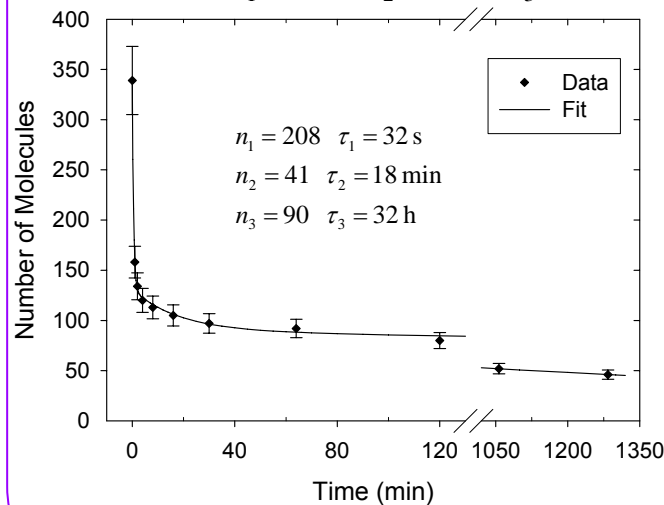


(c) Model of Defect



Molecular Lifetime (before photobleaching)

$$N(t) = n_1 e^{-t/\tau_1} + n_2 e^{-t/\tau_2} + n_3 e^{-t/\tau_3}$$



Constant irradiation at 532 nm, 2 kW/cm²