

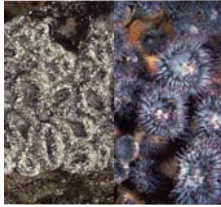
Field Guide For Hopkins Marine Station's Common Intertidal Invertebrates  
 Prepared by Kimberly Heiman 4/9/01



*Anthopleura sola* 15cm diam.  
 Solitary anemone, Oral disk has dark strips. Shells attached.  
 Mid- intertidal



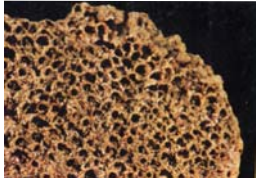
*Anthopleura xanthogrammica*,  
 18cm diam  
 Giant green anemone, green oral disk, no shells attached, found submerged Mid, Low-intertidal exposed



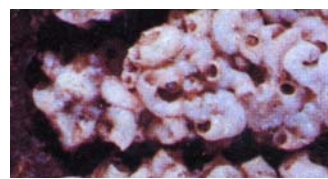
*Anthopleura elegantissima*, 5cm diam  
 Aggregating anemone, mats caused by clone division, shells attached.  
 Mid-intertidal



*Corynactis californica* ~10 mm diam  
 Strawberry anemone, red orange, pink with white tentacles.  
 Low-intertidal



*Phragmatopoma californica*  
 ~10mm diam opening. Tube worm, tubes made of shell fragments or sand, often on lower parts of boulders.  
 High-intertidal, protected



*Spirorbids* ~3mm across  
 Tube worm, small white tube coiled one time. Mid-intertidal



*Lottia limatula* ~25mm  
 Limpet, egg-shaped, file-like ribs, does not conform to rocks.  
 High, Mid-intertidal



*Lottia digitalis* ~25mm  
 Limpet, worn-looking, oval shaped, apex anterior quarter  
 High-intertidal



'*Collisella*' *scabra* 25mm  
 Limpet, conforms to rocks, anterior and posterior slopes straight. High-intertidal



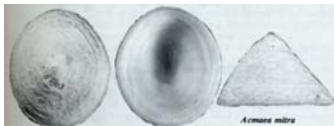
*Lottia pelta* ~30mm  
 Limpet, dark, medium-high profile, apex anterior third, ribbed  
 High, Mid-intertidal



*Lottia asmi* ~10mm  
 Limpet, high profile, dark, apex anterior 3rd, smooth cone associated with *Tegula*.  
 Mid-intertidal



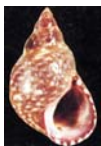
*Lottia gigantea* ~60mm  
 Owl limpet, low profile, apex anterior, broad ribs, egg shaped  
 High-intertidal, exposed



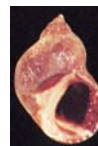
*Acmaea mitra* ~30mm  
 Limpet, high profile, apex subcentral, straight slopes, light. Mid-intertidal



*Fissurella volcano* ~30mm  
 Keyhole limpet, pink-red in color, associated with coralline algae. Mid, Low-intertidal



*Littorina scutulata*  
 ~10mm diam  
 Periwinkle, elongated  
 Highest-intertidal



*Littorina keenae*  
 ~10mm diam  
 Periwinkle, wider less elongated shell, white strip on inner lip.  
 Highest-intertidal



*Tegula funebris*  
 ~20mm diam  
 Black turban snail, Dark shell with light apex, black foot.  
 High, Mid-intertidal



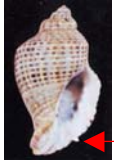
*Calliostoma ligatum* ~22mm diam  
 Topsnail, conical chocolate brown shell w tan spiral ridges. Blue interior, orange foot. Mid, Low- intertidal



*Tegula brunnea*  
 ~28mm diam  
 Brown turban snail. Shell often overgrown with red alga, rust-orange foot.  
 Low-intertidal



*Crepidula adunca* ~10mm  
 Hooked slipper snail, associated with other snails, anterior hook  
 Mid, Low-intertidal



*Acanthina punctulata* ~30mm high, Spotted unicorn whelk, Black dashes on surface, smooth lip with a tooth.  
Mid-intertidal, protected.



*Nucella ostrina* ~35mm high Emarginate Dogwinkle, Thick purple lip, associated with barnacle & mussel beds, shell color variable (orange, dark striped)  
Mid-intertidal, exposed (variable)



*Lepidochitona hartwegii* 28mm long, Chiton, smooth wide green plates, orange foot found under *Pelvetia*.  
High-intertidal



*Mopalia muscosa* ~55mm long. Chiton, Dark broad plates, dark hairy foot  
Mid-intertidal, Exposed



*Pollicipes polymerus* 6cm long. Gooseneck barnacle, fleshystalk, articulated shell w two main plates on each side. Mid-intertidal exposed



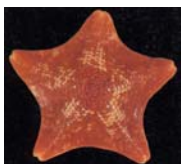
*Chthamalus spp.* 8mm diam Acorn barnacle, gray with darker gray beak.  
High-intertidal



*Pagurus samuelis* Carapace 18mm long Hermit crab. Blue bands on legs.  
Tidal pools



*Pagurus hemphilli* Carapace 18mm long, Hermit crab, red legs. Tide pools



*Asterina miniata* ~5cm Bat Star, webbed arms, color variants include: yellow, orange, red, and tan.  
Low-intertidal~ subtidal



*Ocenebra circumtexta* 17mm high Circled rock whelk, outer lip bumpy due to connection with outer ridges, black marks in concentrated bands.  
Mid-intertidal, protected



*Sepulorbis squamigerus* ~10mm diam openings Fixed snail, furrowed and ridged tube. Mid, Low-intertidal protected



*Nuttallina californica* 40mm long, Chiton, Long narrow, moderately hairy dark brown foot.  
High-intertidal



*Haliotis cracherodii* ~18cm Black abalone, dark shell, black mantle extends over shell  
Mid-intertidal~subtidal



*Mytilus californianus* 10cm long Mussel, blue-brown, with strong ribs  
Mid-intertidal, exposed



*Balanus glandula*, 15mm diam Acorn barnacle, tall white, ridged, hooked plates.  
High-intertidal



*Tetraclita rubescens* ~30mm diam Barnacle, red, ridged, tan legs  
Mid, Low-intertidal, exposed



*Strongylocentrus purpuratus* 60mm diam Purple sea urchin.  
Low-intertidal



*Pisaster ochraceus* ~12cm Ochre Starfish, web-like ridges on surface, hard white spines, color variants include: orange, purple, and brown.  
Low-intertidal ~subtidal exposed