

SELECT PR IMAGES AND CAPTIONS FOR:
The Michael Donald Brown Collection part of the **Asian American Art Initiative**
Cantor Arts Center at Stanford University

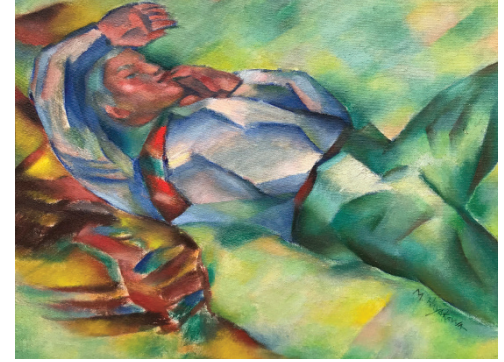
*These images are provided for the working media to use in publicizing the event. All other uses are prohibited.
The images may not be cropped, bled off the page, overprinted with text, or altered in any way.*



Toshio Aoki (Japanese, active in U.S.A., 1854–1912), *Persimmons in an Indian Basket*, 1895. Oil on canvas. The Michael Donald Brown Collection, made possible by the William Alden Campbell and Martha Campbell Art Acquisition Fund and the Asian American Art Initiative Acquisitions Fund, 2020.21



Toshio Aoki (Japanese, active in U.S.A., 1854–1912), Detail of *Chang-E*, c. 1890. Watercolor, sumi ink, and metallic watercolor on paper. The Michael Donald Brown Collection, made possible by the William Alden Campbell and Martha Campbell Art Acquisition Fund and the Asian American Art Initiative Acquisitions Fund, 2020.22



Miki Hayakawa (American, born in Japan, 1899–1953), *Sleeping Man*, 1926. Oil on canvas. The Michael Donald Brown Collection, made possible by the William Alden Campbell and Martha Campbell Art Acquisition Fund and the Asian American Art Initiative Acquisitions Fund, 2020.48



Asian American Art Initiative Acquisitions Fund, 2020.52

Hisako Hibi (American, born in Japan, 1907–1991), *Untitled*, 1947. Oil on canvas. The Michael Donald Brown Collection, made possible by the William Alden Campbell and Martha Campbell Art Acquisition Fund and the

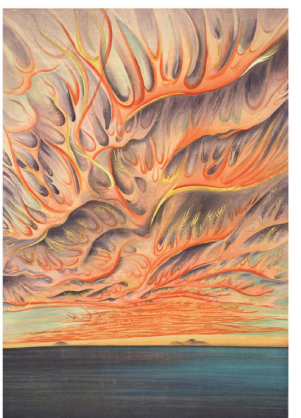


Asian American Art Initiative Acquisitions Fund, 2020.54

Matsusaburo George Hibi (American, born in Japan, 1886–1947), *Three Muses*, 1930. Oil on canvas. The Michael Donald Brown Collection, made possible by the William Alden Campbell and Martha Campbell Art Acquisition Fund and the



Tameya Kagi (Japanese, 1851–1894), *Morning Drink*, 1880. Oil on canvas. The Michael Donald Brown Collection, made possible by the William Alden Campbell and Martha Campbell Art Acquisition Fund and the Asian American Art Initiative Acquisitions Fund, 2020.63

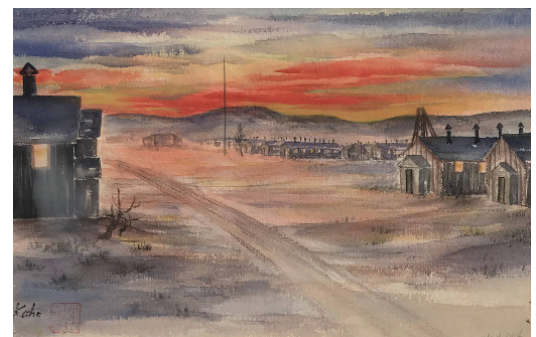


Martha Campbell Art Acquisition Fund and the Asian American Art Initiative Acquisitions Fund, 2020.92.3

Chiura Obata (American, born in Japan, 1885–1975), *Sunset Over Sacramento Valley*, 1930. Woodcut and color. The Michael Donald Brown Collection, made possible by the William Alden Campbell and



Jade Fon Woo (American, 1911–1983), *Chinese Night Club*, c. 1938. Watercolor and graphite on paper. The Michael Donald Brown Collection, made possible by the William Alden Campbell and Martha Campbell Art Acquisition Fund and the Asian American Art Initiative Acquisitions Fund, 2020.142



Koho Yamamoto (American, born in 1922), *Untitled*, 1944. Watercolor on paper. The Michael Donald Brown Collection, made possible by the William Alden Campbell and Martha Campbell Art Acquisition Fund and the Asian American Art Initiative Acquisitions Fund, 2020.153