

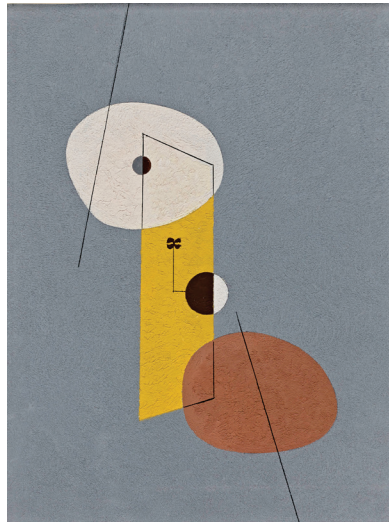
SELECT PR IMAGES AND CAPTIONS FOR:
The Early Twentieth Century — 9/1/21 to ongoing

Marie Stauffer Sigall Gallery (214, 2nd floor)

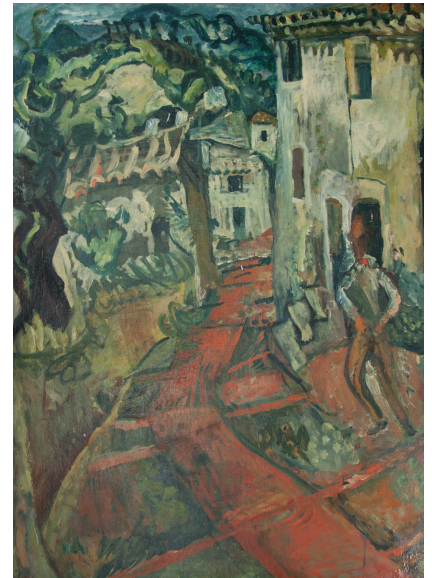
These images are provided for the working media to use in publicizing the exhibition. All other uses are prohibited.
The images may not be cropped, bled off the page, overprinted with text, or altered in any way.



Elmer Bischoff (American, 1916–1991), *Untitled (Scene with "X")*, c. 1950. Oil on canvas. Gift of Adelle Bischoff, 2006.115



Charles Green Shaw (American, 1892–1974), *Abstraction Number 8*, 1940. Oil on canvasboard. Museum purchase made possible by a gift from Bobbie and Mike Wilsey, 2008.235



Chaim Soutine (French, born in Belarus, 1893–1943), *Cagnes-sur-Mer (The Road)* 1918–1919. Oil on canvas. Private collection, Portland, Oregon



Edward Hopper (American, 1882–1967), *New York Corner (Corner Saloon)*, 1913. Oil on canvas. Museum purchase made possible by the Halperin Art Acquisition Fund, an anonymous estate, Roberta & Steve Denning, Susan & John Diekman, Jill & John Freidenrich, Deedee & Burton McMurtry, Cantor Membership Acquisitions Fund, an anonymous acquisitions fund, Pauline Brown Acquisitions Fund, C. Diane Christensen, an anonymous donor, Modern & Contemporary Art Acquisitions Fund, and Kazak Acquisitions Fund, 2015.6



Gabriele Münter (German, 1877–1962), *Red Cloud*, 1910. Oil on board. Private collection



Robert Henri (American, 1865–1929), *Portrait of Robert MacNamara*, c. 1924–1928. Oil on canvas. Private collection



John Singer Sargent (American, 1856–1925), *Portrait of Sally Fairchild*, 1884–1887. Oil on canvas. Gift of Dr. Herbert and Elizabeth Sussman, David and Valerie Rucker, Dr. Stephen Sussman and Kelly Watson, Eric and Nancy Sussman, and Dean and Chiara Sussman, 2012.1