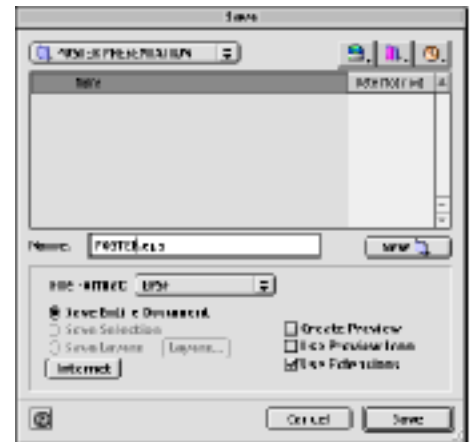
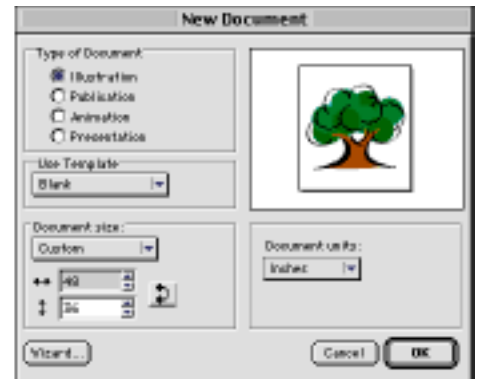


Denba Software **CANVAS (7)** - Slide Instructions

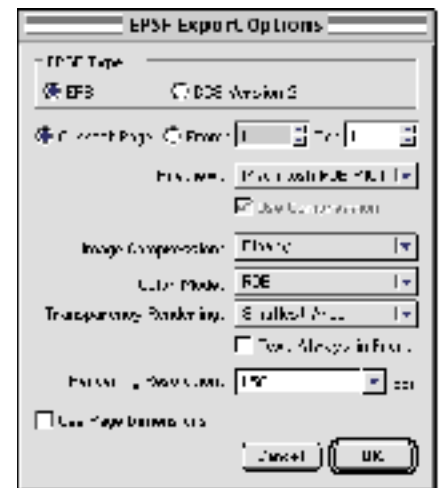
The Canvas software is a graphic tool. A new document must be opened and set-up properly for each slide you wish to create. The following instructions should help.

- Open a **NEW** document from the **FILE** menu.
- Choose: **Illustration**
- Using **Document Layout/Set-Up** from the **Layout** menu make a custom page of 7.33 x 11 inches (This page is your slide, create your image and add text within this page. Remember that this page represents the whole piece of film which will be put into a slide mount after imaging. Therefore you need to leave approximately 5% to 7% free space all the way around to avoid your image and/or text being clipped by the slide mount.)
- The "screen-white" you see on the page will image as black. You must draw a rectangle the same size as your page, fill it with the desired background color. From the **Object** menu, point to **Arrange** and select: **Send to back**. It will then be behind all of your art work and text. If white is desired use approx. 5% gray for best results.
- Save frequently during the creation process. Selecting **SAVE** from the file menu will save your document as a native Canvas file. You should always have the "Canvas" version of all of your files.



• When you are ready to bring your file to VAS for imaging do the following:

- **SAVE AS EPSF**, making sure that the check boxes for **Create Preview** and **Use Icon** are all **UN**checked (the only box that should be checked is **Use Extensions**).
- **EPSF Export Options** should be set as follows:
 - **EPSF Type:** EPS
 - **Image:** Level 2 ASCII
 - **Image Color:** RGB
 - **Preview:** None
- **Render mode:** Transparent Areas
- **Resolution:** 300.



Visit the Deneba Web Site: <http://www.deneba.com>

See Canvas-Print Instructions for specifics on preparing files for prints.

Visual Art Services • Stanford • Digital Imaging • 650-723-6813

revised 8/13/02