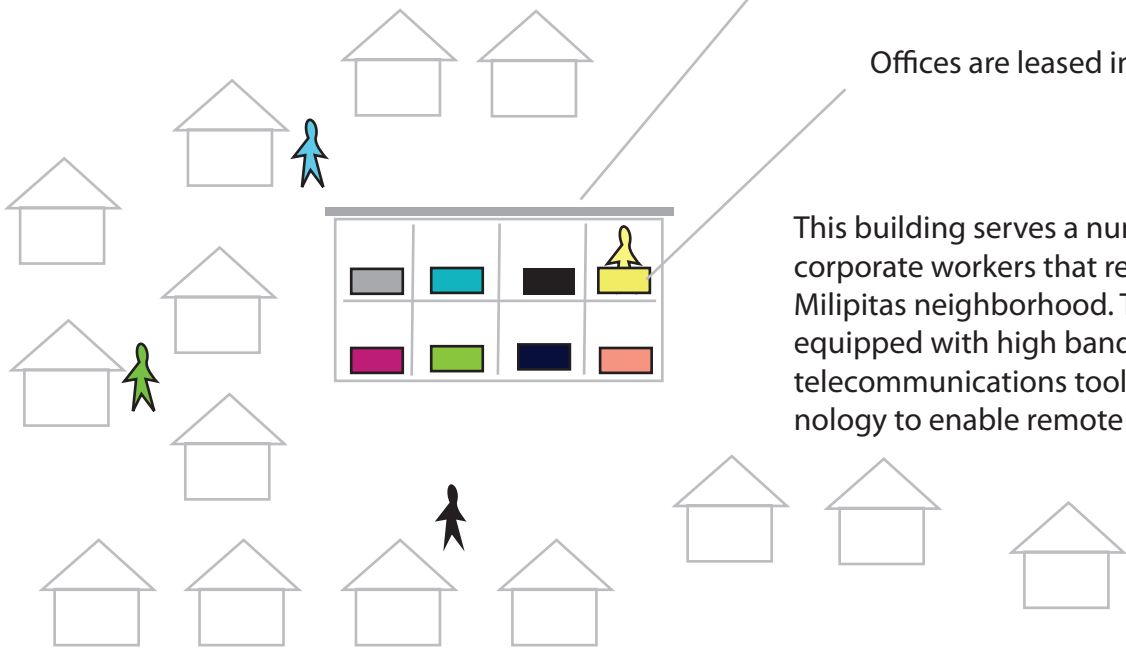


Satellite Tech Stations

One Satellite building is rented out to multiple companies

Offices are leased individually

This building serves a number of corporate workers that reside in this Milpitas neighborhood. The facility is equipped with high bandwidth telecommunications tools and technology to enable remote work.



10 mile commute in 2015

Satellite Tech Stations + Electric Bike Ferries

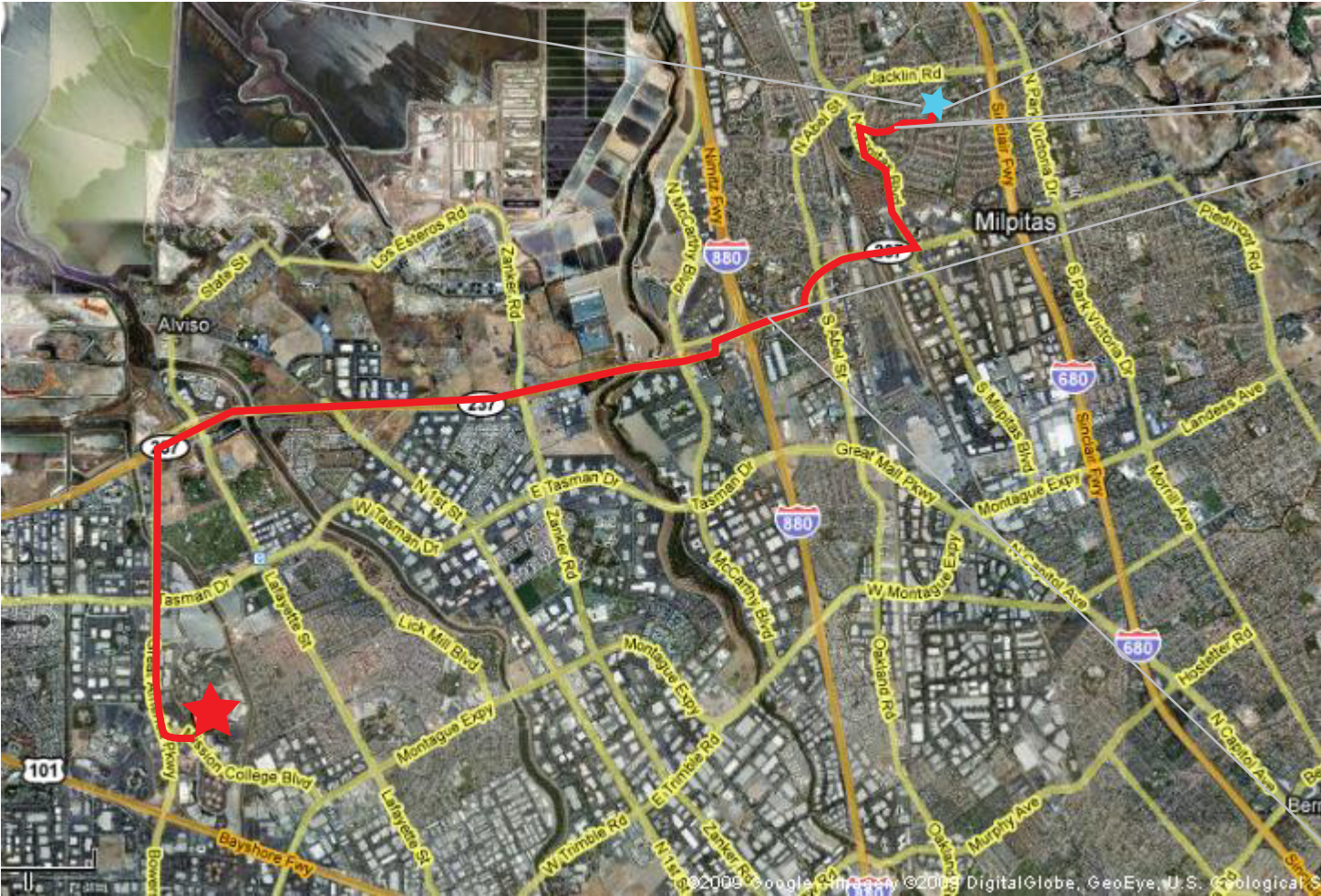
Corporate workers alternate between working remotely from satellite offices and commuting to the main office.

by Jean Hsu

- Satellite office buildings are within walking distance of residential communities.
- Ferries run frequent routes along major thoroughfares. i.e. Park Victoria Drive, highway 237, and Great America Pkwy.
- Bikers may attach and detach from ferries freely.



Commuters use bikes for short 1-2 mile distances.



Electric Bike Ferries

