

# ***KINEMATIC/KINESTHETIC***

**Extreme Lengths Productions**

Ben Levine, Lead Artist + Producing Director  
Fatima Dyfan + Annie Peterson, Project Managers

# ABOUT THE PROJECT

*Kinematic/Kinesthetic* is dance performance project centered around **disability robotics** that uses **technological innovation** as a tool for **artistic generation**.

- Involves assistive movement technology that can be used by dancers with and without disabilities
- Collaboration with AXIS Dance Company
- Performance premiere at the San Francisco Exploratorium in 2025

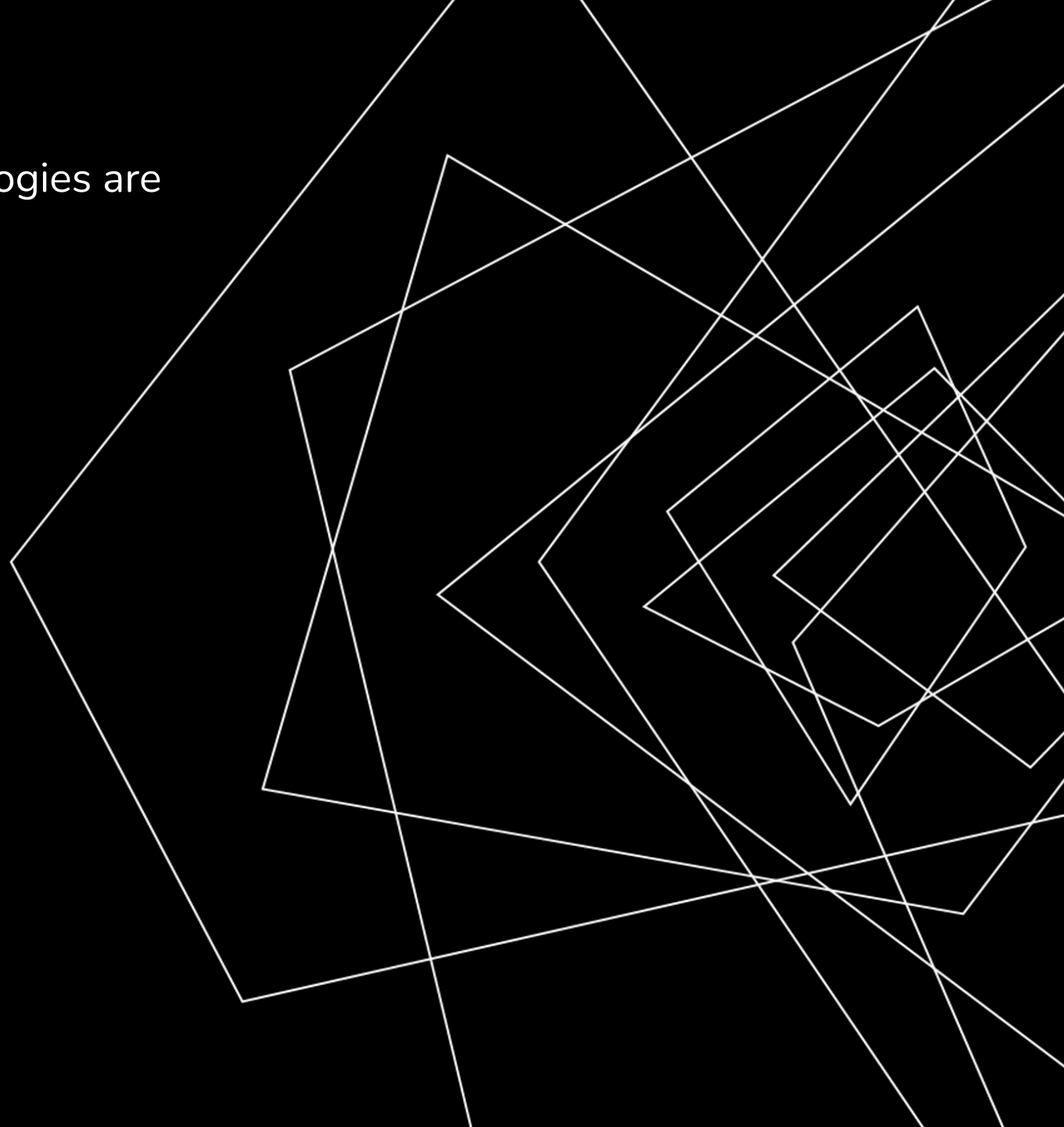


# THE CHALLENGE

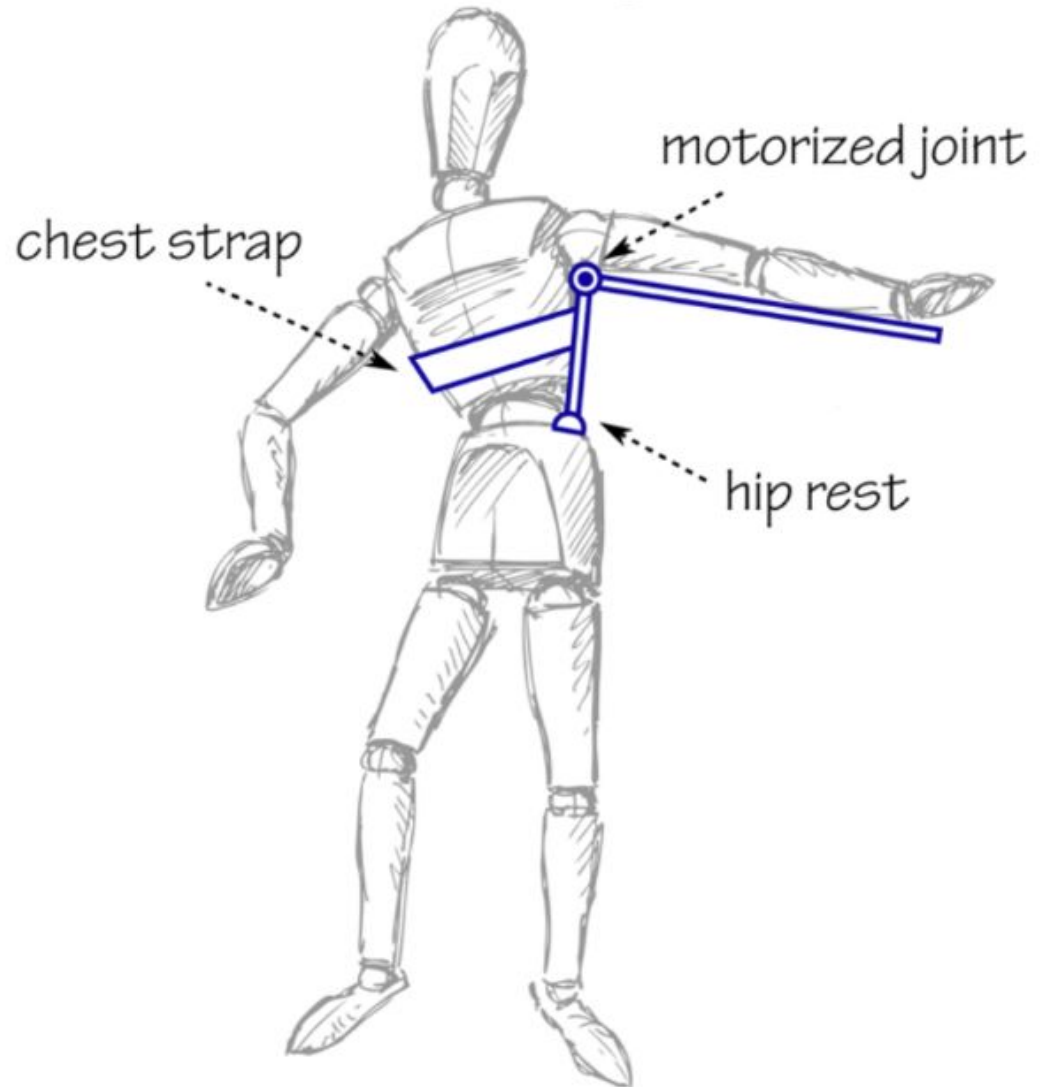
- Many existing assistive movement technologies are based on the medical model.

# GOALS

- A goal of the project is to center the notion that **physical disabilities are not a “problem” to be “fixed.”**
- Development of technology that provides **new movement possibilities** for the user beyond that of assimilation and replication.
  - Unfamiliar, species atypical, “superhuman” movement



## Motorized Shoulder Joint



**PRELIMINARY DESIGN CONCEPT**

# Robotic Arms

arm with discrete joints

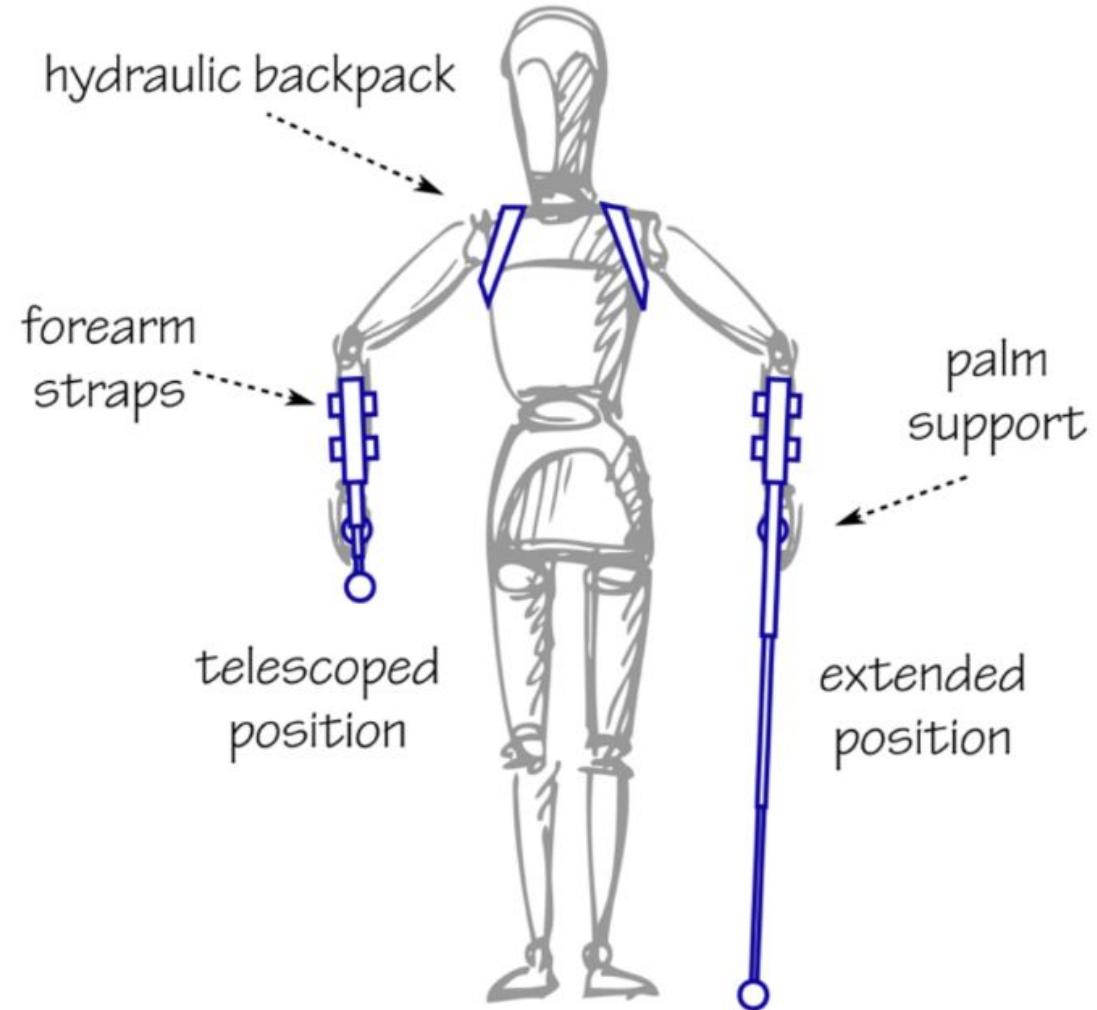


continuum arm



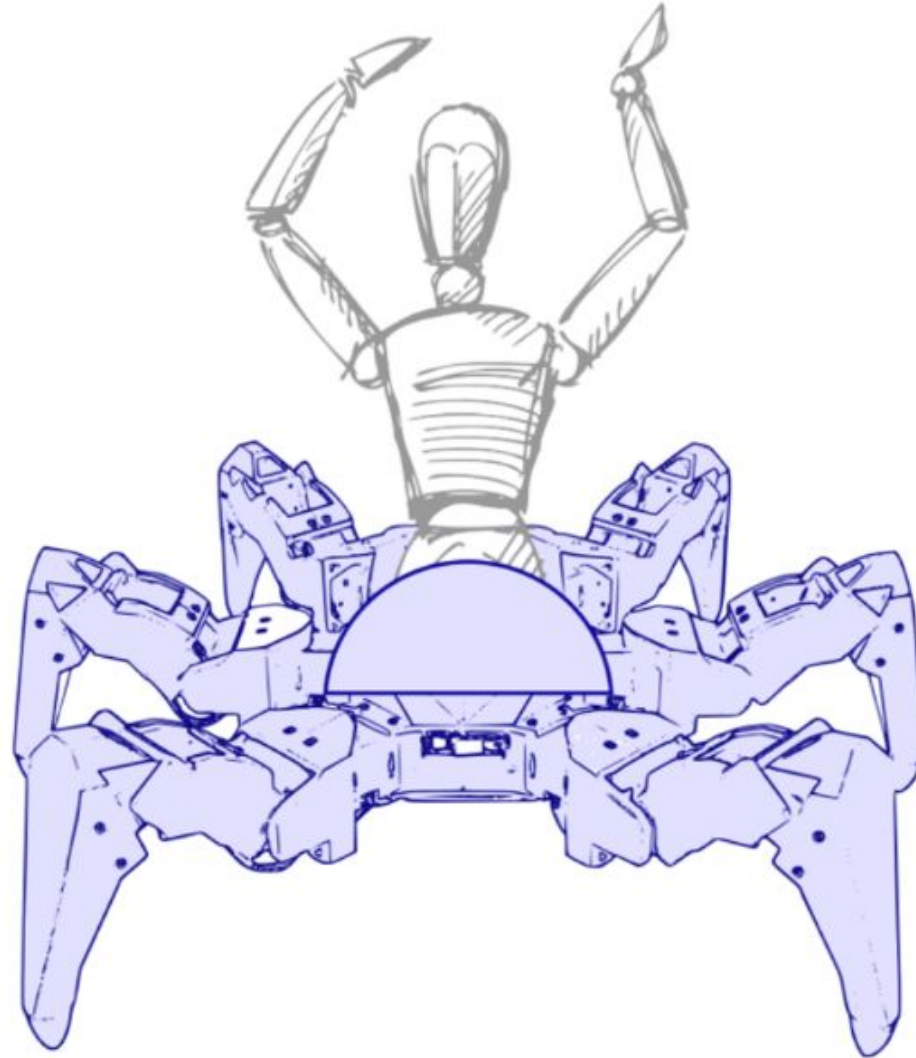
**PRELIMINARY DESIGN CONCEPT**

## Extendable/retractable crutches



**PRELIMINARY DESIGN CONCEPT**

# Hexapod Robot



**PRELIMINARY DESIGN CONCEPT**



## OTHER DETAILS

- We are interested in working with students with mechanical backgrounds.
- The team you'll work with:
  - Ben Levine, Lead Artist + Producing Director
  - Fatima Dyfan + Annie Peterson, Project Managers
  - Mel Nehrkorn + Andrew Pendleton, Technical Advisors
- AXIS Dance Company staff and dancers will test the equipment

We'd love to collaborate!

- Check out: [extremelengths.org](http://extremelengths.org)
- Questions? Email [annie@extremelengths.org](mailto:annie@extremelengths.org)