

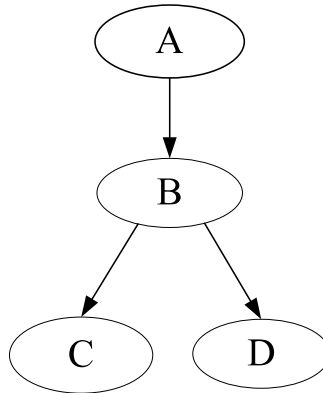
Practice questions for Quiz 3

CS228 - Winter 2009

January 23, 2009

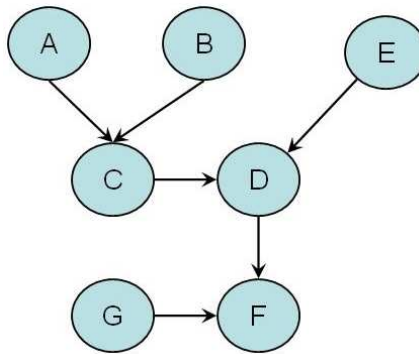
The following questions are provided as examples of the types of questions will ask on the quiz this week, as well as the kinds of questions you should be asking yourself (and answering) as you read/review the text. You are encouraged to collaborate on this practice quiz material.

1 Minimal I-map for a subset of variables



Given the Bayesian network above, make a minimal I-map of the distribution over A, C and D that results from marginalizing out the node B.

2 Variable Elimination



Consider running variable elimination in the Bayesian network above. We first eliminate G, then we eliminate D. What is the scope of the factor produced by eliminating D (after the elimination is performed)? If we choose the variable elimination order to be G, D, F, C, E, A, B, what's the induced graph?

Other than the two above, some of this week's quiz questions are also based on materials from last week, so please review them carefully.