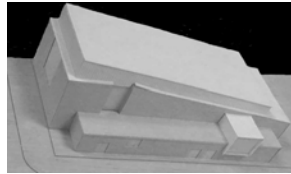


CEE 130 – Introduction to Architecture Studio

Final Assignment:
Plan and Model of an Artist's Residence**Requirements**

- You are to develop a personal parti for what is essentially a small three-room house.
- This assignment also requires you to adhere to a simple architectural program for a residence of an artist (a painter).
- The assignment calls for a model, a one-page summary parti and a schematic plan on trace.

Model

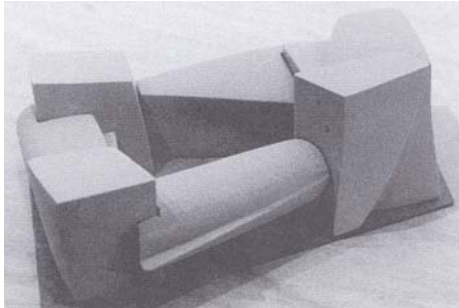
- The scale and nature of the model is to be determined on an individual basis.
- Use chipboard or other suitable mat board (only white or off-white) for walls and floor. You may also use bass/balsa wood for the massing model.
- Other materials – such as balsa wood or white foam core board can be used for rafters, trusses, columns, and beams.

Deliverables

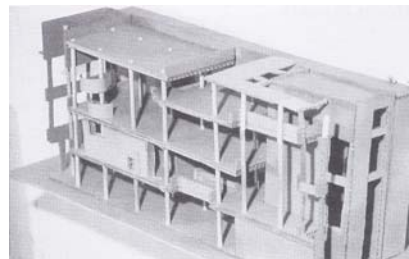
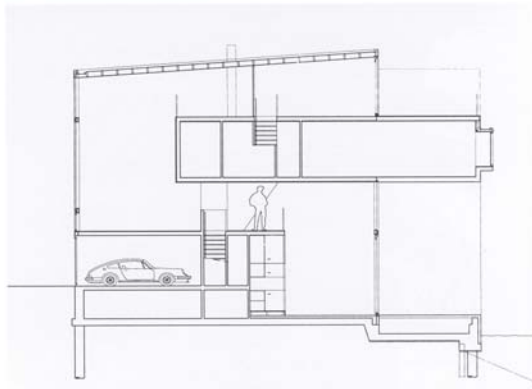
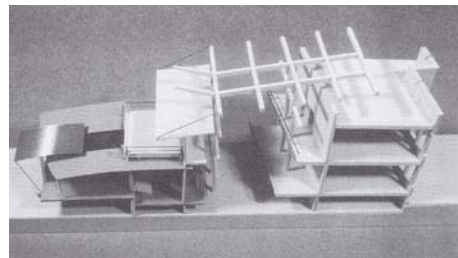
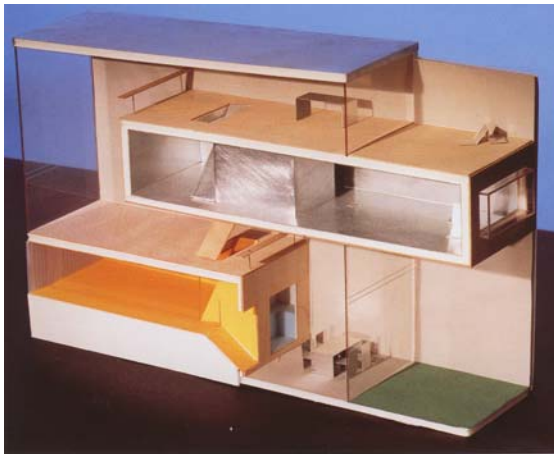
1. A summary page with concept diagrams on your personal parti (*Due one class prior to final presentation. A copy will be emailed to our guest critics.*)
2. A schematic plan on trace with line work done with felt-tip pens (*Due at final presentation.*)
3. A final model (*Due at final presentation.*)
4. Optionally, you might want to include a section drawing.

Choose the model type relative to what you are trying to convey
Options

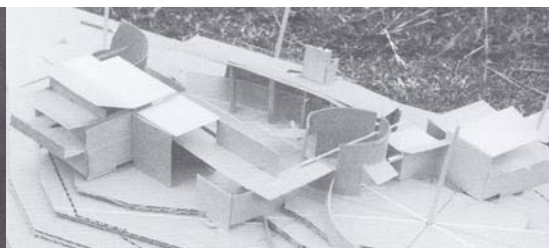
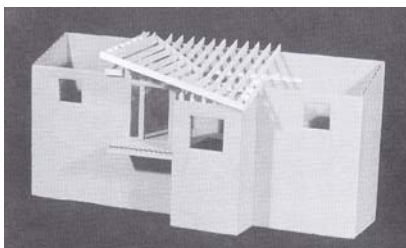
1. Massing Model



2. Section Model



3. Solid/Void Model

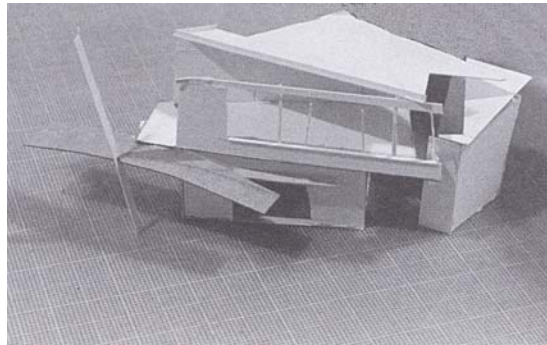


Expanded design considerations to prioritize

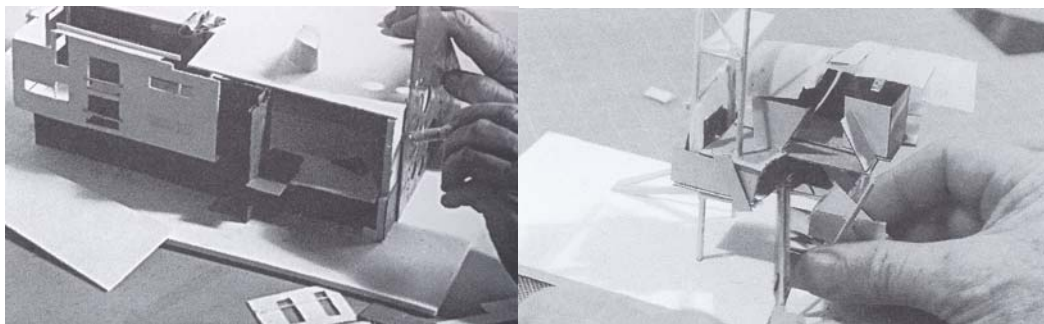
1. Articulation of the façade, consideration of the actual envelope vs. structure of the building (consider it is not just windows that articulate a façade).

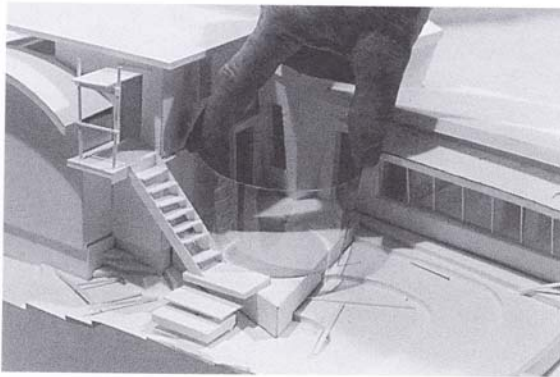


2. Recycling of previous parts: A means of expanding on additional alternatives



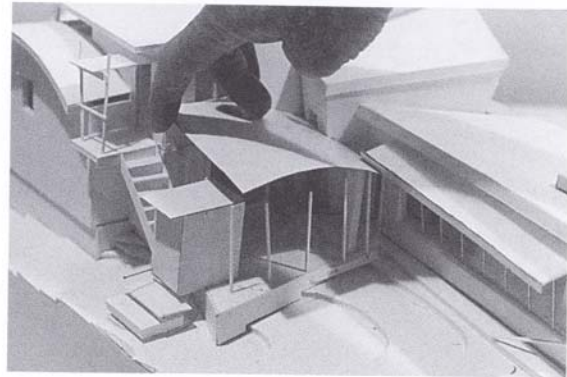
3. Modifying models (e.g., looking at the general concept or taking apart sections and restudying)





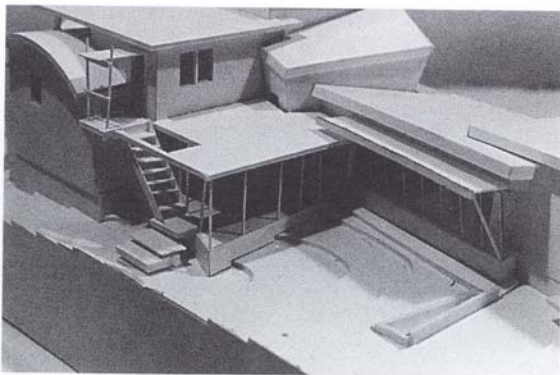
First Alternative

The finish model is used to explore porch enclosures by curving glass around slab. *Note:* Thick, flexible acrylic has been used, but the actual glass would most likely be made from tangented flat planes.



Second Alternative

This scheme explores the use of a curved roof plane with a series of columns cut from plastic rods.



Third Alternative

A flat roof solution is tested, following the geometry of the slab below and extending out to engage the second-story stairs.